

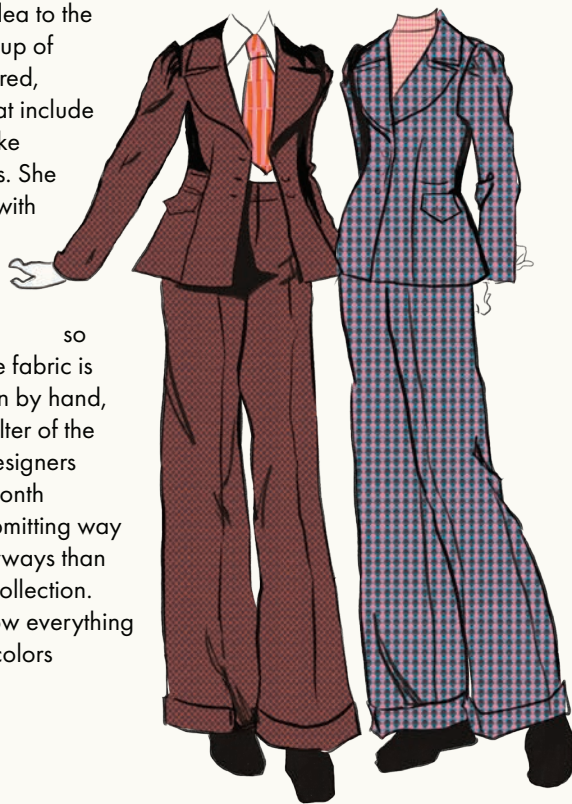
GEO/METRY



★ COLLABORATIVE COLLECTION ★

When it's time to create a collaborative collection, we use a process we jokingly call "Shark Tank". We each put together a mood board for a group collection, and then we pitch our ideas to each other in a group meeting. After discussing all the options and deciding together which collection we're most excited about, we go straight to work on making art. The designer who pitched the winning idea will art direct the collection, and help to pull it all together.

For our collaborative collection Geometry, Melody pitched an idea to the designers to do a group of simpler, vintage-inspired, hand-drawn prints that include geometric elements like lines, stripes, and dots. She imagined something with the vintage vibes of double knit polyester fabrics (the designs are so good even though the fabric is so bad!) but all drawn by hand, and put through the filter of the RSS designers. The designers spent a little over a month working together, submitting way more ideas and colorways than are used in the final collection. Melody helped narrow everything down and tie all the colors together at the end.

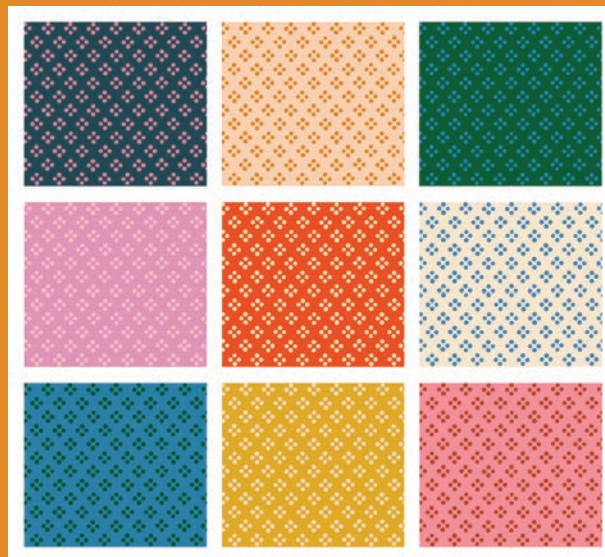


THE HARD WORK OF NARROWING DOWN OUR COLLECTIONS!

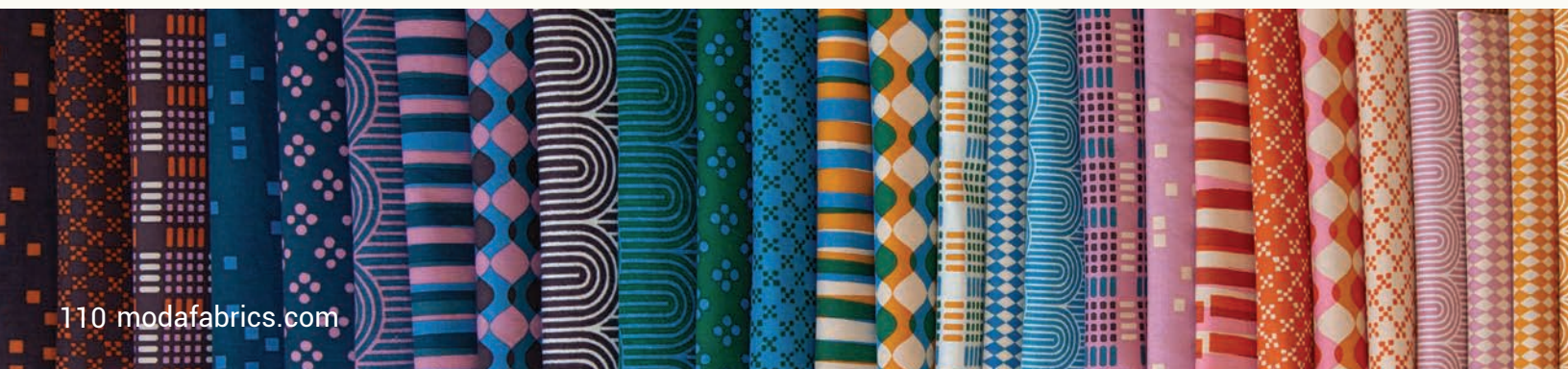
As a group, we create so many designs for a collaborative collection that we don't end up using, even if we love them! Below, designs by Melody and Alexia that the group decided not to include in Geometry. It can be hard to choose what to let go of and what to keep! If we're lucky, we may see these in another collection in the future.



In her original mood board, Melody put together this cluster of designs to show the other designers how she envisioned the color for the collection. The color evolved over time into the collection as we see it now, and the top three colorways were used in the final group!

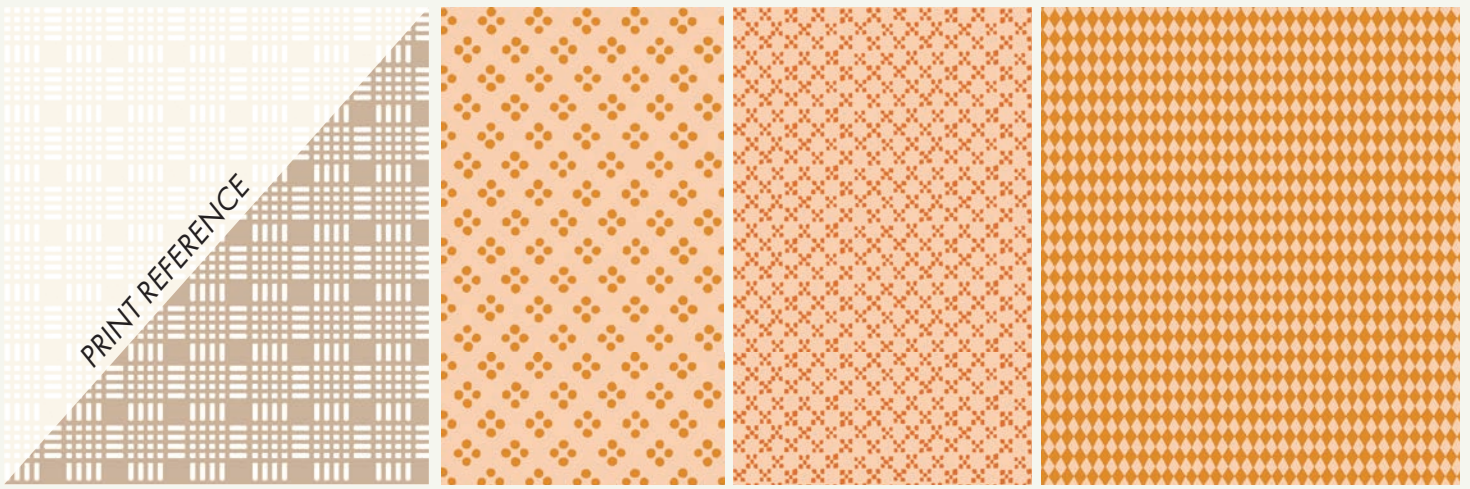


THE FINAL CUT! WE LOVE IT!



Use our free pattern or kit to make a quilt that perfectly fits the mid-century vibes of this collection!



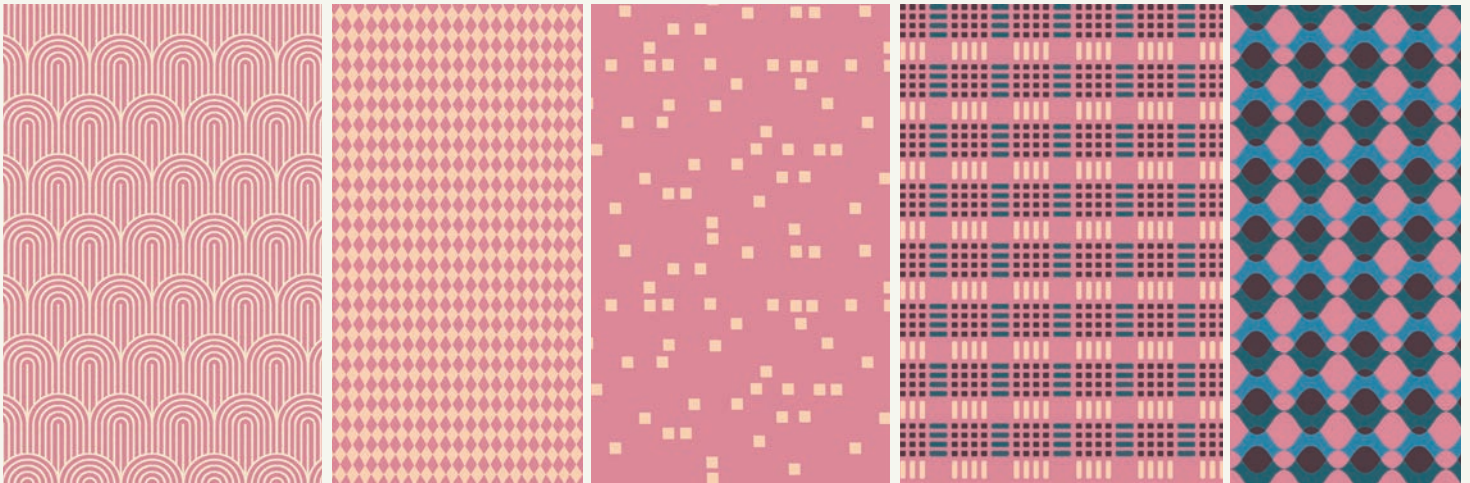


RS5173 11*
PARALLEL | NATURAL

RS5172 11*
PIXIE | CREAMSICLE

RS5175 11
TILES | CREAMSICLE

RS5176 12*
HARLEQUIN | TURMERIC



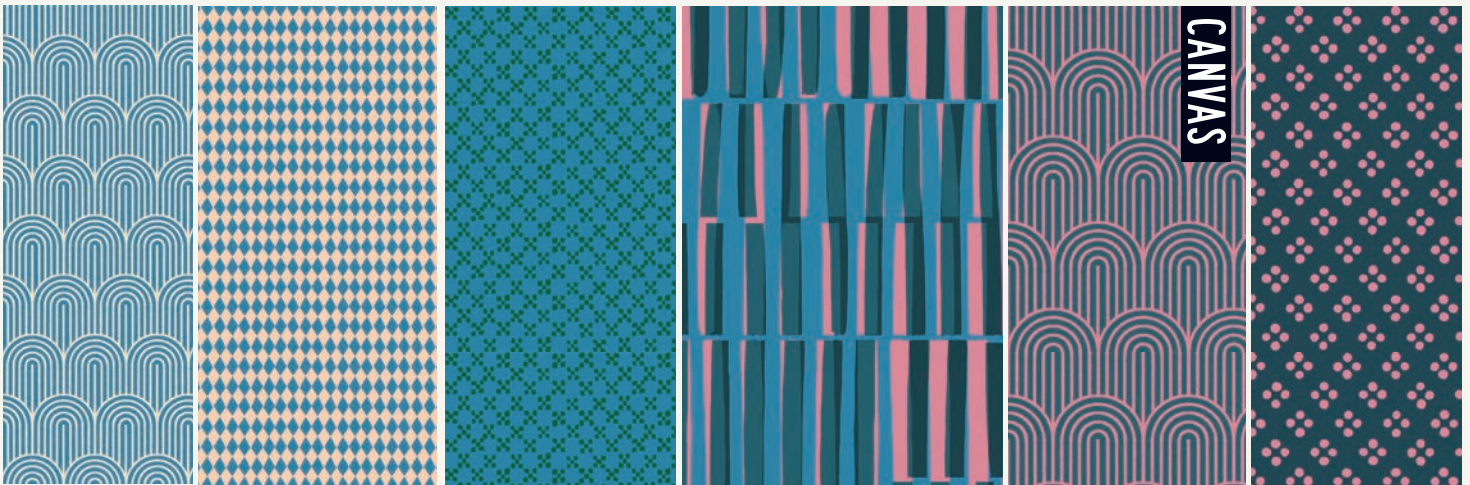
RS5174 12*
HUMP DAY | PLUM

RS5176 11*
HARLEQUIN | PLUM

RS5177 12*
SQUARE DANCE | PLUM

RS5173 14*
PARALLEL | PLUM

RS5171 13*
RIPPLE | EGGPLANT



RS5174 13*
HUMP DAY | CHAMBRAY

RS5176 13*
HARLEQUIN | CHAMBRAY

RS5175 16
TILES | CHAMBRAY

RS5170 14*
LADDERS | CHAMBRAY

RS5178 19L
HUMP DAY CANVAS | GALAXY

RS5172 13*
PIXIE | GALAXY

AUGUST 2025 DELIVERY

26 premium 100% Ruby Star Cotton prints
3 Cotton/Linen Canvas Prints (70% cotton, 30% linen)

ASSORTMENTS & PRECUTS

Select assortment available ASSTRS5170-10H
(10 yds of 20 skus with *)

ASSTRS5170

15

10

10H

RS5170

FQ

JR

LC

MC

PP

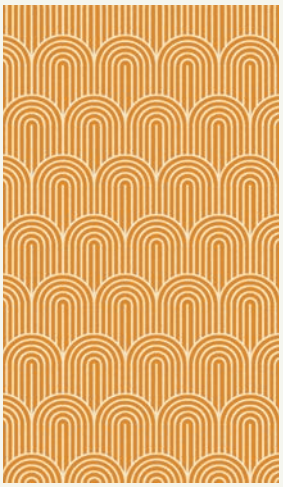
ALL PRINTS SHOWN AT 30% SCALE

GEO/METRY

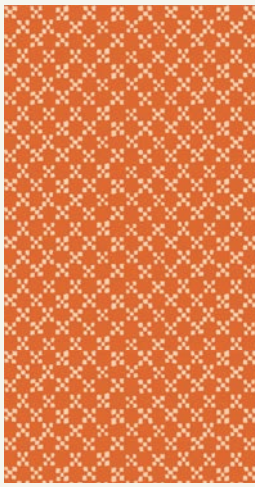


★ COLLABORATIVE COLLECTION ★

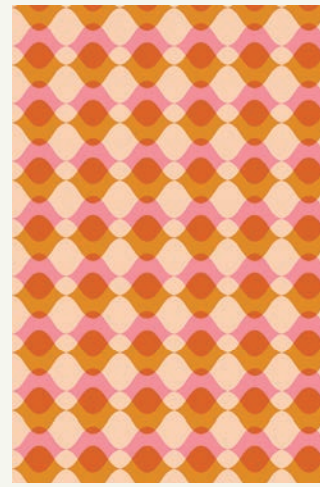
COORDINATES & COMPLEMENTS



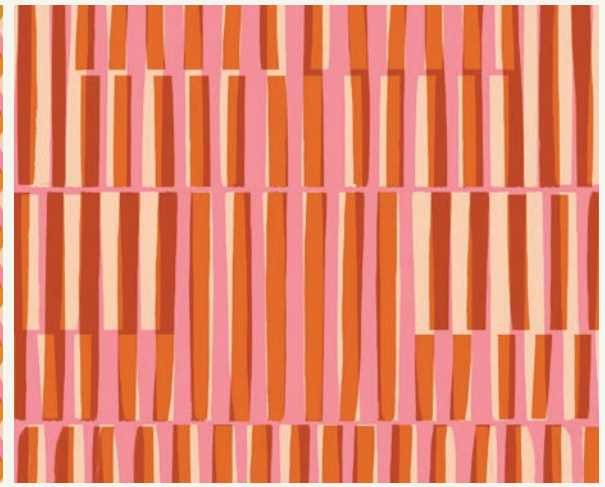
RS5174 11*
HUMP DAY | TURMERIC



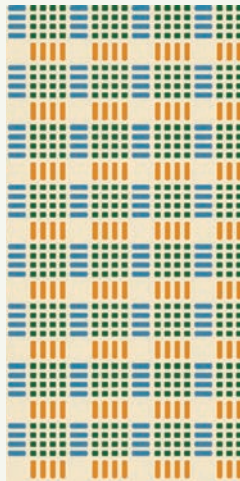
RS5175 13*
TILES | PECAN



RS5171 11*
RIPPLE | SORBET



RS5170 13*
LADDERS | SORBET



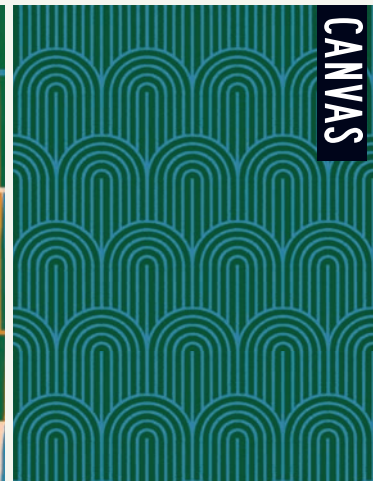
RS5173 12
PARALLEL | JADE



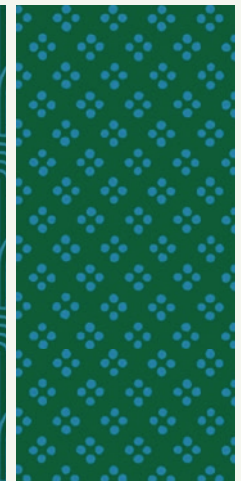
RS5171 12*
RIPPLE | TURMERIC



RS5170 12
LADDERS | TURMERIC



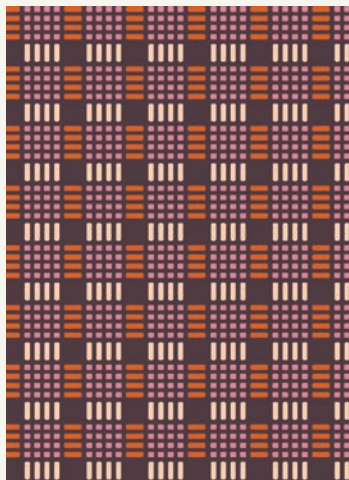
RS5178 21L
HUMP DAY CANVAS | JADE



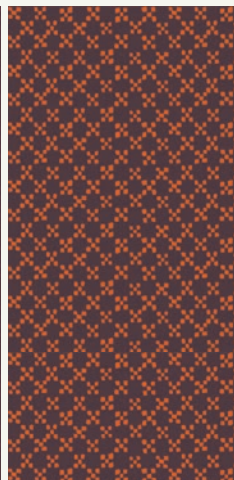
RS5172 14*
PIXIE | JADE



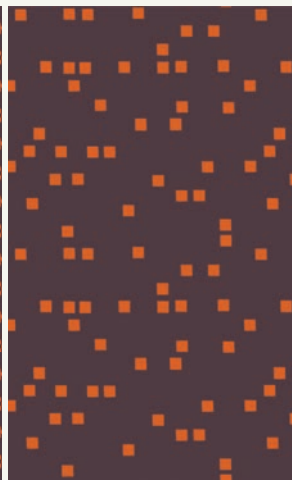
RS5177 15*
SQUARE DANCE | GALAXY



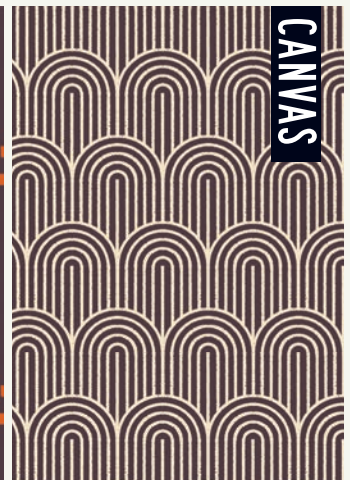
RS5173 15
PARALLEL | EGGPLANT



RS5175 14*
TILES | EGGPLANT



RS5177 13
SQUARE DANCE | EGGPLANT



RS5178 13L
HUMP DAY CANVAS | EGGPLANT

CREME BRULEE RS5027 136



CACTUS RS5027 63M

SORBET RS5027 92M



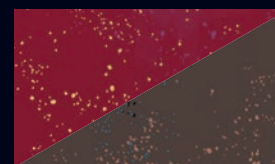
SADDLE RS4109 51

WARM RED RS4109 53



CAYENNE RS5027 64M

WINE TIME RS5027 36M



CAVIAR RS5027 134

TEAL RS5027 53M



CHAMBRAY RS5027 128

AVAILABLE
AS A KIT!

with templates!

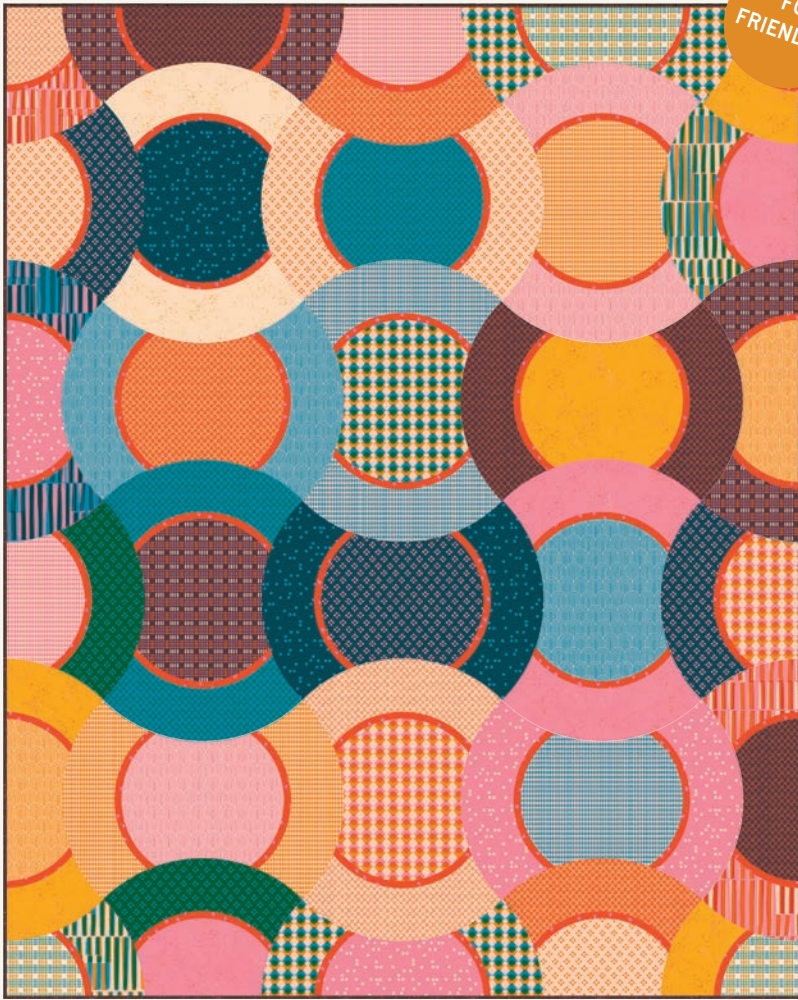


RS5170 KIT Ruby Star Society | Geometry Quilt Kit

65" x 73½"

We are so excited to announce our newest kit, the Geometry Quilt, that is also a new free pattern! The free pattern includes printed templates to make each block, and our kit includes our first ever Ruby Star Society acrylic templates! With the release of the Geometry collection, we thought there was no better time to use...geometry, to create a quilt using all triangles that is full of mid-century modern vibes! Follow our layout for a simple yet stunning design. Hold on to our acrylic rulers to make more Geometry quilts in the future!

FQ
FRIENDLY!



ES 551RPL Everyday Stitches | Ripple Effect

57" x 71"



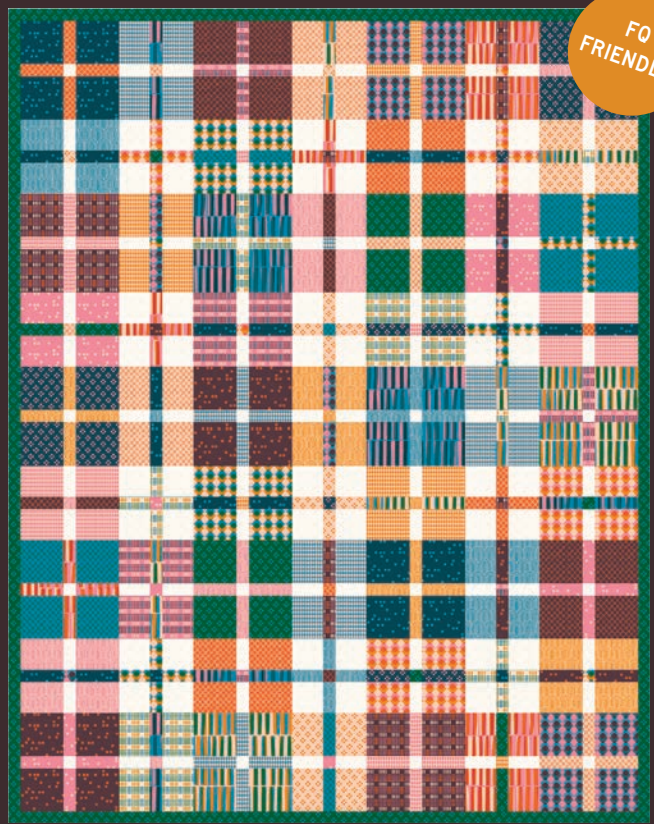
HCD 005 Holly Clarke | Vintage Bling

72" x 72"





PPP 44 Pen + Paper Patterns | Night Owl 51½" x 62½"



FQ FRIENDLY!

KTQ 186 Kitchen Table Quilting | Mini Plaid-ish Quilt 64" x 78"



FQ FRIENDLY!

CKQ 2402
57½" x 57½"

Copper Kettle Quilt Co
Skybound

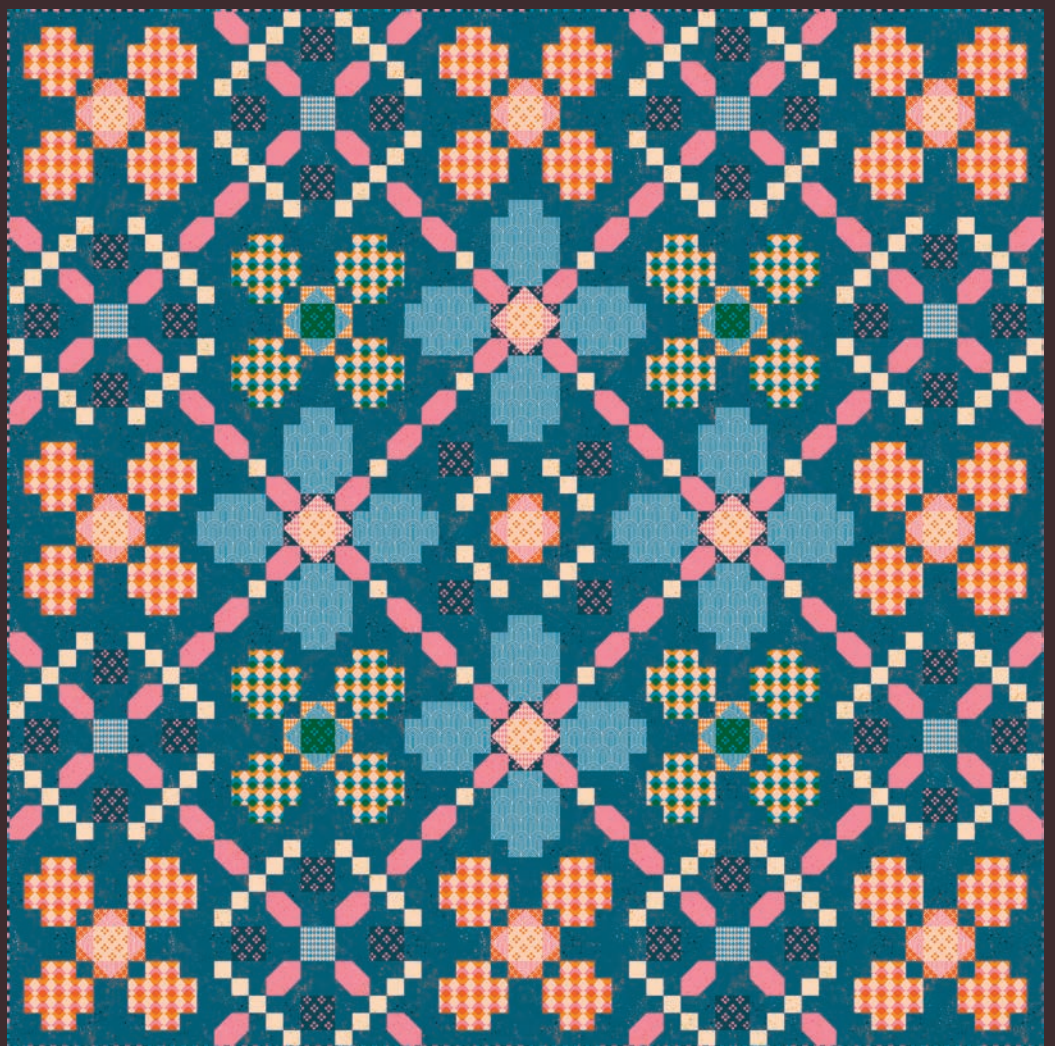


MMD 1103
56" x 64"



LC FRIENDLY!

Meadow Mist Designs
Board and Batten



SEW 002
90" x 90"

Sewtopia
Picnic Tile