



TURN ON SOUND ↑



'Smol:' adjective, of internet origin, meaning something little and so extremely cute you just wanna squeeze it! Kimberly Kight's Smol collection is full of little cute things - teeny tulips, tiny tweed, and Scandinavian inspired flowers that would look right at home in a cheery kitchen. Them Apples is a fruity followup to Kim's uber popular Strawberries print, and would be great for teacher gifts.

### OCTOBER DELIVERY

19 premium 100% Ruby Star Cotton prints

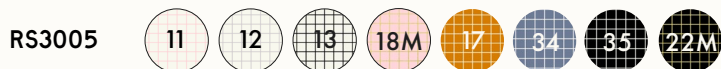
RS3014



### SUGGESTED SPECKLED COORDINATES & COMPLEMENTS



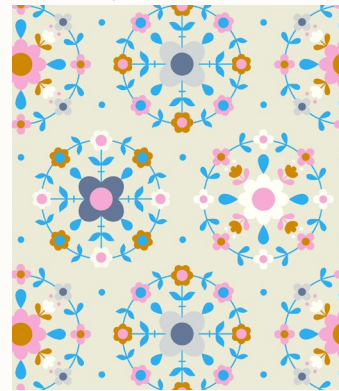
### SUGGESTED GRID COORDINATES & COMPLEMENTS



### SUGGESTED MODA BELLA SOLID COORDINATES & COMPLEMENTS

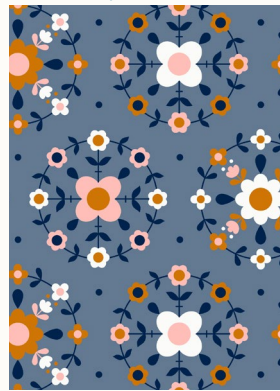


FOLKOMETRY | SHELL



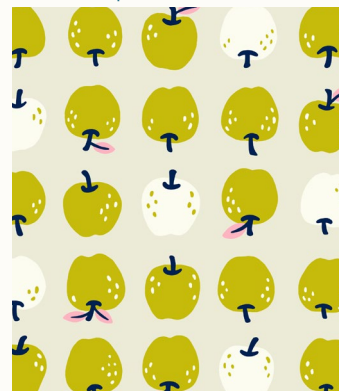
RS3014-11

FOLKOMETRY | DENIM



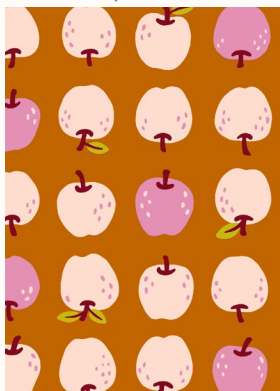
RS3014-12

THEM APPLES | PISTACHIO



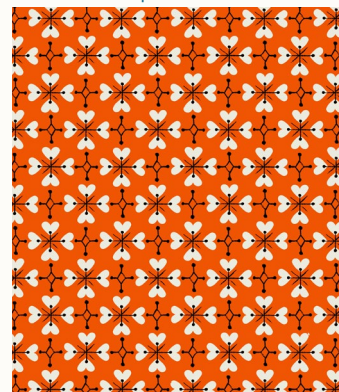
RS3016-11

THEM APPLES | CARAMEL



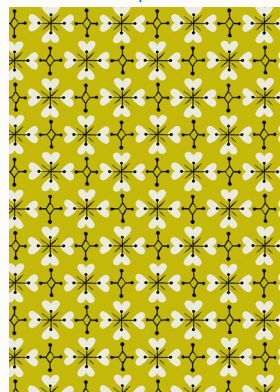
RS3016-14

COEUR DE FLEUR | WARM RED



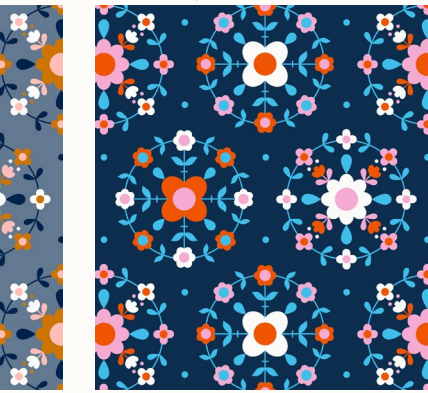
RS3018-14

COEUR DE FLEUR | PISTACHIO



RS3018-15

FOLKOMETRY | NAVY



RS3014-13

KIM'S KNUTS | PEACH



RS3015-11

KIM'S KNUTS | DARK ORCHID



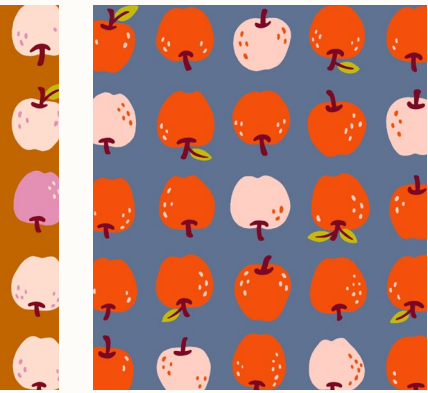
RS3015-12

KIM'S KNUTS | NAVY



RS3015-14

THEM APPLES | DENIM



RS3016-15

TULIP CALICO | SHELL



RS3017-11

TULIP CALICO | ORCHID



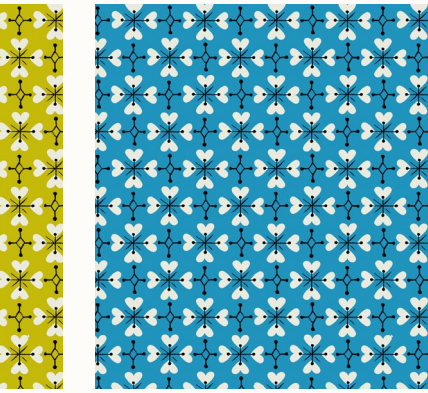
RS3017-12

TULIP CALICO | NAVY



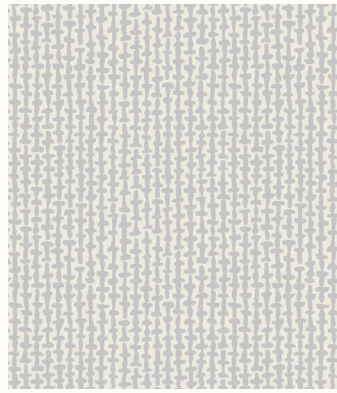
RS3017-14

COEUR DE FLEUR | BRIGHT BLUE



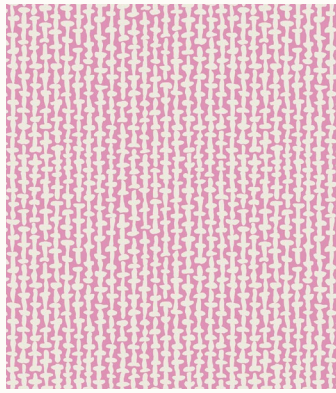
RS3018-16

TWEED | DOVE



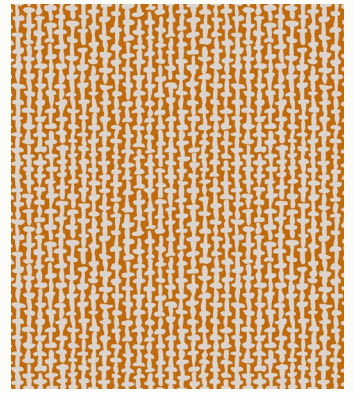
RS3019-11

TWEED | KISS



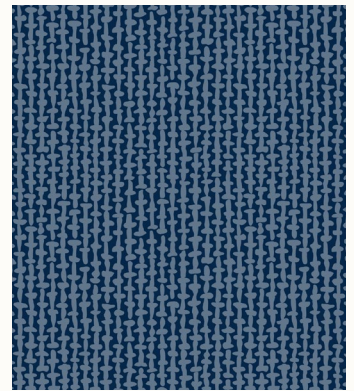
RS3019-12

TWEED | BUTTERSCOTCH



RS3019-13

TWEED | NAVY



RS3019-14





FO FRIENDLY

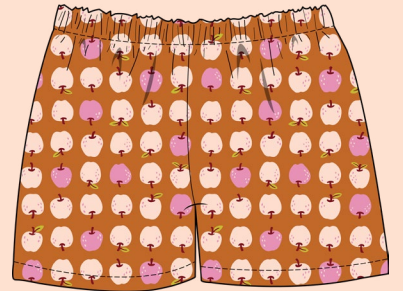
WCS 029 Whole Circle Studio - Apple Turnover

60" x 60"



WC 113 Wisecraft Handmade - Cotillion (see photo at right)

45" x 54"



**TMB 163**  
Taylor Made  
Sew Easy Pajama Pants









**ES 506SND**  
Everyday Stitches  
Secondhand Gem  
58" x 79"



**PS RS3014-1**  
Ruby Star Society  
Project Sheet  
Reusable Shopping Bag



PPP 17 Pen + Paper Patterns - Won't You Be My Neighbor

62" x 70"



QL 134 Quilty Love - Hopscotch II

60" x 78"



